

Upper South Long Lake 2013 Curlyleaf Pondweed

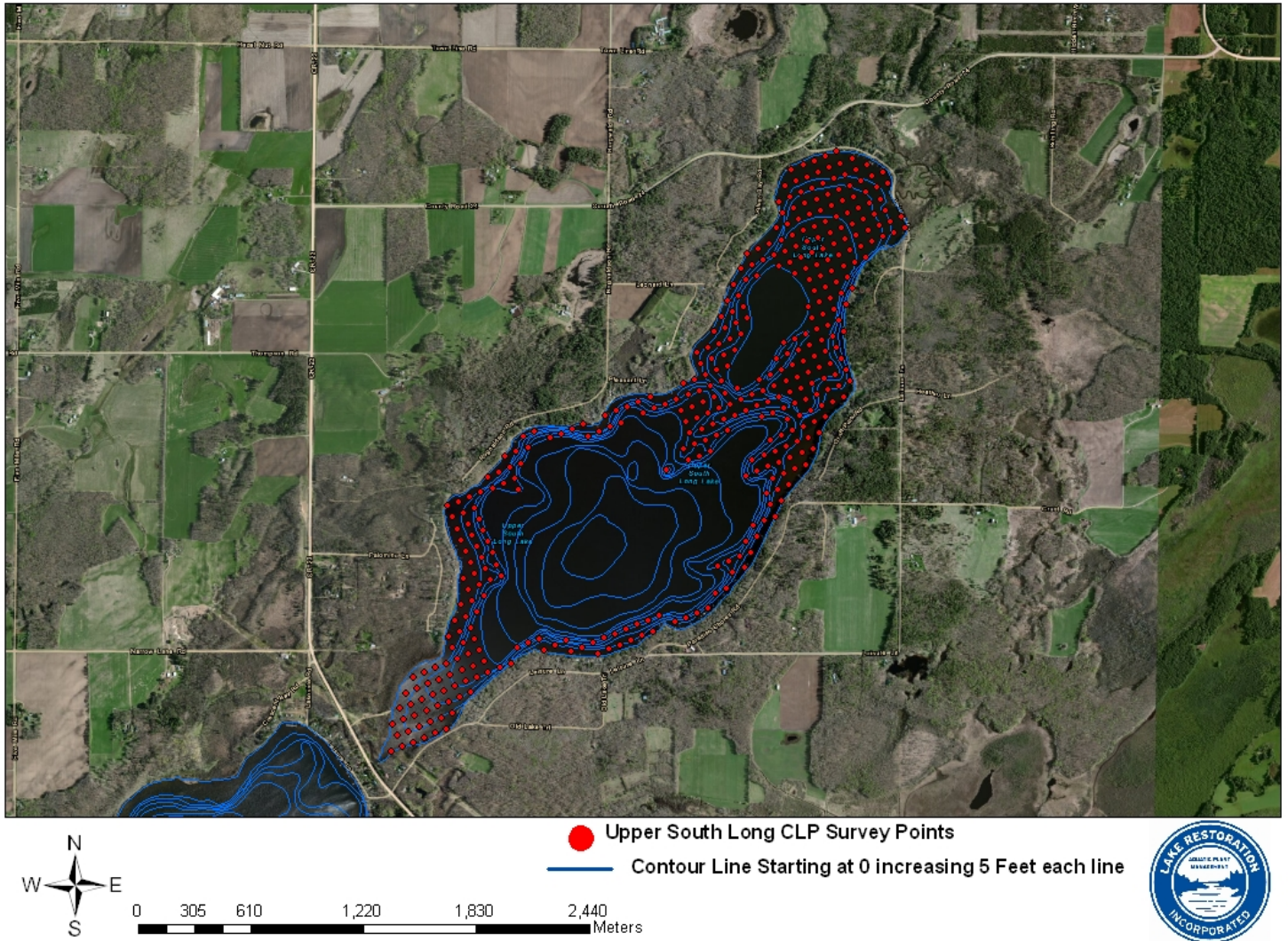
Pre treatment inspection on May 13, 2013



Summary of Inspection:

On May 13, 2013 Upper South Long Lake was inspected using the point intercept method. A map identifying the 404 points sampled is below. Sample points were received from the MN DNR Brainerd office from a survey they conducted in 2009. Data on depth and abundance rank was recorded. A double-tined metal rake attached to a rope was used to collect specimens. Curlyleaf pondweed was identified and given a ranking based on cover of rake tines. A scale of 1 to 4 was used to identify the density. On this scale, 1 is sparse and 4 is dense.

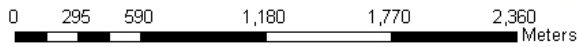
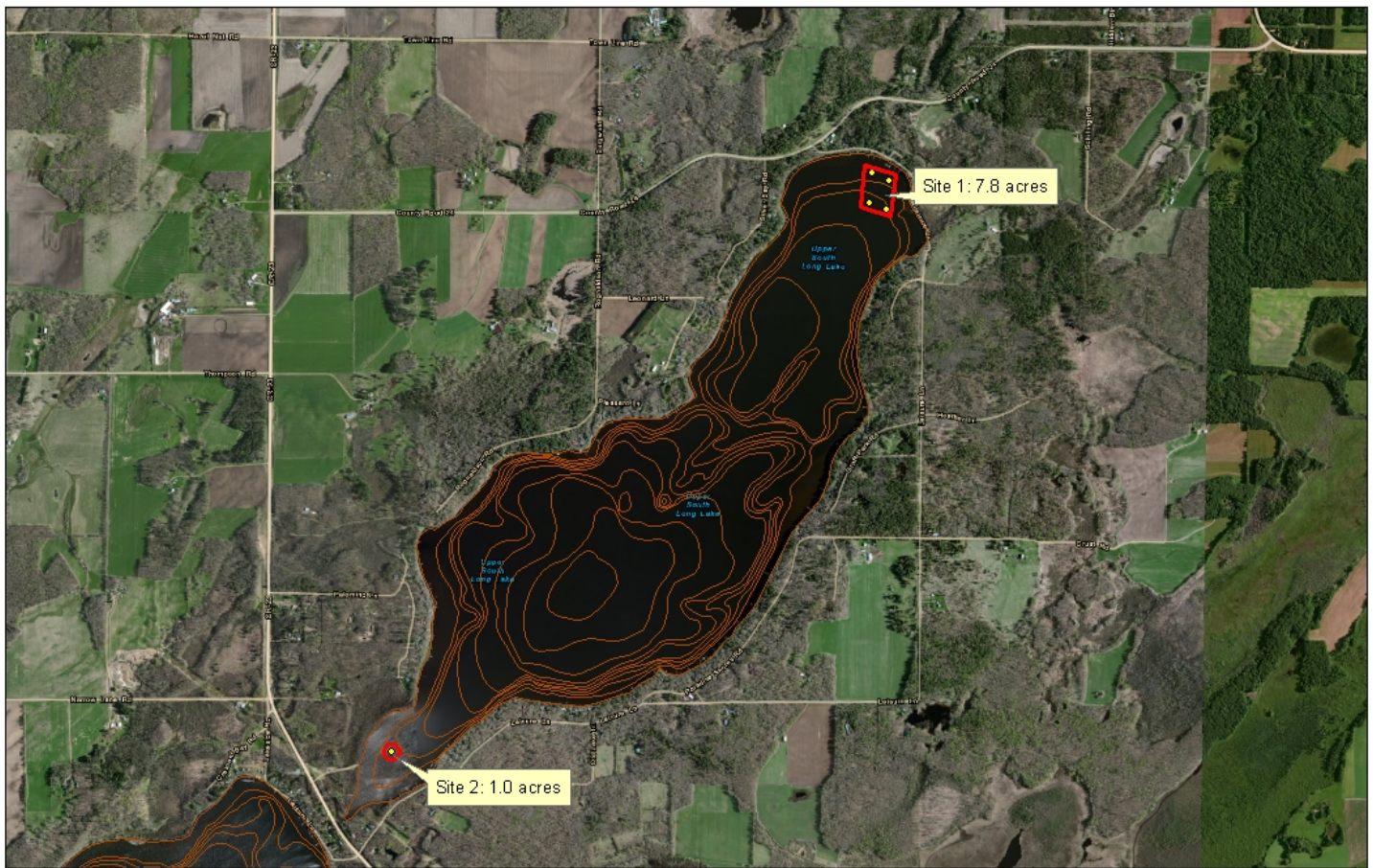
Upper South Long





Results of May 13, 2013 survey:

On May 13, 2013 Lake Restoration completed a Curlyleaf pondweed survey which resulted in the identification of 8.8 acres to be submitted to the MN DNR for approval for treatment (Map A). Of the 404 points sampled, 5 points were identified with Curlyleaf pondweed with a density of 1. The water temperature on the pre-treatment inspection was 44 degrees Fahrenheit.

Upper South Long (Crow Wing) DOW: 18009600



-  Proposed 2013 Treatment Sites
 -  Curlyleaf Pondweed Identified
- Survey was conducted on May 13, 2013 by Steve Symalla of Lake Restoration



Map A: May 13, 2013 Curlyleaf pondweed survey results.

Based upon our survey results Lake Restoration has two recommendations for the 2013 treatment. The Upper South Long Lake Improvement District could choose to treat the 8 acres identified by our survey on May 13th or you could choose to treat the same areas which were identified in 2012. The plants which Lake Restoration did find were only about 6 inches long. Three might be shorter Curlyleaf Pondweed plants which were not picked up by the inspection rake.

Lake Restoration will wait to hear back from the Upper South Long Lake Improvement District before sending pre-treatment survey information to Dan Swanson of the DNR for permit approval.